

Municipal Waste Landfill Inspection Report

| | | | |
|-----------------------------------|---------------------------------------|----------------------------|-----------------------|
| Permit Number | 100022 | EPA ID Number | ---- |
| Facility Name | CHRIN BROS SANI LDFL | Operator Name | CHRIN BROS INC |
| Address | 1225 INDUSTRIAL DR | Address | 1225 INDUSTRIAL DR |
| City/State/Zip | EASTON PA 18042-6829 | City/State/Zip | EASTON PA 18042-6829 |
| Municipality | Williams Township | County | Northampton |
| Responsible Official | Gregory Chrin | Title | Owner/ Operator |
| Person Interviewed | Joe Klobusicky | Title | Environmental Manager |
| | | Telephone # | 1 |
| Lead Inspector | EDWARD MCNULTY | Title | SLD WSTE SPCST |
| Site ID | 238053 | Client ID | 42952 |
| PF ID | 240650 | SF ID | 201820 |
| Inspection Start Date | 08/13/2025 10:10 AM | Inspection End Date | 08/13/2025 11:45 AM |
| Inspection Type | RTNC - Routine/Complete Inspection | Inspection Result | No Violations Noted |
| Permit Expiration Date | 01/06/2030 | Days/Week Operated | 6 |
| | | Max. Daily Volume | 2000 Tons/Day |

Check Lists

| Municipal Waste Landfill (0131) | | | |
|---------------------------------|------------------------------|------------------|-----------|
| Status | Requirement | Chapter Citation | Line Item |
| GENERAL PROVISIONS | | | |
| No Violation | Required insurance in effect | 271.371 | 1 |

| | | | |
|-------------------------|---|-----------------|----|
| | (expiration date) 12/01/2025 | | 1A |
| No Violation | Operation in accordance with approved plans and permit. | 273.201(c)(2) | 2 |
| No Violation | Operation within permit boundaries (vertical and horizontal). | 273.201(c)(2) | 3 |
| No Violation | Disposal Timing and sequence as per Section 273.112(1). | 273.201(c)(2) | 4 |
| No Violation | No unapproved wastes or liquids. | 273.201(d)-(m) | 5 |
| No Violation | Isolation distances are adhered to. | 273.202(a) | 6 |
| No Violation | Facilities certification requirements followed. | 273.203(a), (b) | 7 |
| No Violation | Written Department approval of new construction prior to waste disposal. | 273.203(c) | 8 |
| DAILY OPERATIONS | | | |
| No Violation | Proper signs posted. | 273.211(a) | 9 |
| No Violation | Site perimeter clearly marked and grid coordinate system in use. | 273.211(b)-(d) | 10 |
| No Violation | Proper barriers installed around site and access controlled when attendant not present. | 273.212(a)-(i) | 11 |
| No Violation | Access roads maintained and negotiable by collection vehicles. | 273.213(a)-(i) | 12 |
| No Violation | Approved means of measuring and inspected waste utilized. Remark: Chrin's weight scale was last calibrated 7/23/25, Chrin recorded 65 overweight trucks in July 2025 | 273.214(a), (b) | 13 |
| No Violation | Adequate equipment on-site and stand-by equipment available. | 273.215(a), (b) | 14 |

| | | | |
|--------------|---|-----------------|----|
| No Violation | Vehicles directed promptly to unloading area and promptly unloaded. | 273.216(a), (b) | 15 |
| No Violation | Solid waste spread and compacted as approved by Department as part of permit. | 273.216(c) | 16 |
| No Violation | Operator implements fugitive air contaminant control/measures and prevents and controls air pollution including no exceeding of ambient air quality standards, no open burning, and minimizing generation of fugitive dust emissions from facility. | 273.217(a) | 17 |
| No Violation | Operator complies with Air Quality Plan approval and Air quality Operating Permit. | 273.217(b) | 18 |
| No Violation | Operator does not cause or allow attraction, harborage, or breeding of vector. | 273.218(a) | 19 |
| No Violation | Operator implements nuisance minimization and control plan. | 273.218(b)(1) | 20 |
| No Violation | Operator performs regular, frequent, and comprehensive site inspections to reduce potential for offsite odors. | 273.218(b)(2) | 21 |
| No Violation | Operator promptly addresses and correct problems and deficiencies discovered during inspections. | 273.218(b)(3) | 22 |

| | | |
|--------------|--|----|
| No Violation | Operator implements nuisance 273.218(c) minimization and control plan to minimize and control other conditions harmful to the environment or public health, or which create safety hazards, odors, dirt, noise, unsightliness and other public nuisances. Remark: Chrin's nuisance load log and patrol log were reviewed. Patrols were being conducted in accordance with their nuisance minimization and control plan. No nuisance loads were recorded since the last inspection. | 23 |
| No Violation | Operator does not receive solid waste at a landfill in excess of the maximum or average daily volume approved in the permit. Remark: Daily incoming volumes were reviewed for July 2025. The highest incoming tonnage for July was 854.1 tons on 7/1/25. | 24 |
| No Violation | Operator implements radiation protection action plan. 273.223(a) | 25 |
| No Violation | Operator monitors incoming waste in accordance with Department's guidance or in a manner at least as protective of the environment, facility staff and public health and safety. Remark: Daily Radiation source checks were reviewed since the last inspection. Chrin recorded one radiation hit on 8/13/25. Lu-177, Origin: Holland Disposal (MSW hauling). 273.223(b) | 26 |

| | | | |
|--------------|---|------------|----|
| No Violation | Radiation detector elements shall be as close as practical to wasteload and in appropriate geometry to monitor the waste. | 273.223(c) | 27 |
| No Violation | Operator has portable radiation monitors capable of determining the dose rate and presence of contamination of a vehicle that has caused an alarm. Upon exceedance of alarm level, a radiological survey of the vehicle is performed. | 273.223(d) | 28 |
| No Violation | Operator notifies Department immediately and isolates vehicle when radiation dose rates are exceeded. | 273.223(e) | 29 |
| No Violation | Monitoring equipment is calibrated at frequency specified by manufacturer, but not less than once a year. Remark: Chrin's stationary and handheld radiation meters were calibrated on 7/8/25 and 7/9/25, respectively. | 273.223(f) | 30 |
| No Violation | If radioactive material is detected, vehicle containing material shall not leave facility without written Department approval and an authorized federal Department of Transportation exemption form. | 273.223(g) | 31 |
| No Violation | Uniform cover of the approved daily cover material is placed on exposed solid waste at the end of each working day or at the end of every 24 hours, whichever interval is less. | 273.232(a) | 32 |
| No Violation | If intermediate cover requires revegetation, it is established within 30 days. | 273.233(e) | 33 |

| | | | |
|----------------|--|----------------|----|
| No Violation | Slopes constructed during daily landfilling and intermediate cover activities may not exceed 50 percent. | 273.233(f) | 34 |
| No Violation | Operator does not cause or allow waste pollution within or outside the site from operation of the facility. | 273.241(a)-(c) | 35 |
| Not Applicable | Operator has restored or replaced adversely affected water supply with an alternative source of like quantity and quality. | 273.245(a) | 36 |
| Not Applicable | Temporary water supply is provided within 48 hours. | 273.245(b) | 37 |
| Not Applicable | Permanent water supply is provided within 90 days. | 273.245(c) | 38 |
| No Violation | No waste 15 feet of inside top of the lined perimeter berm. | 273.252(e) | 39 |
| No Violation | Lined perimeter berm 4 ft. high constructed and maintained along edge of the lined disposal area. | 273.252(f) | 40 |
| No Violation | Edge of liner clearly marked. | 273.252(g) | 41 |
| Not Applicable | Alternate leachate recirculation method may be used if approved if one of the liner systems is a composite liner. | 273.274(b) | 42 |
| No Violation | Underground pipes used to transport leachate to leachate storage impoundments or tanks equipped with secondary containment or comply with 245.445. | 273.275(g) | 43 |

| | | | |
|----------------------------------|--|--------------------------------|----|
| Not Applicable | Operator isolates coal seams, coal outcrops and coal refuse from waste deposits to prevent combustion of waste and damage to liner. | 273.291(a) | 44 |
| Not Applicable | Mine openings within site sealed as approved by Department. | 273.291(b) | 45 |
| Not Applicable | Operator implements plan for controlling potential damage from subsidence submitted and approved under 273.120. | 273.291(c) | 46 |
| No Violation | Landfill designed, constructed, maintained and operated to prevent and minimize potential for fire, explosion, or release of solid waste constituents into air, water, or soil of the Commonwealth. | 273.301 | 47 |
| No Violation | Emergency equipment including portable fire extinguishers, fire control equipment, spill control equipment, and decontamination equipment available. For fire equipment requiring water, facility has a water supply of or adequate quantity and pressure to supply the equipment. | 273.302(a) | 48 |
| No Violation | Emergency equipment tested and maintained. | 273.302(c) | 49 |
| No Violation | Adequate space maintained to allow unobstructed movement of emergency personnel and equipment. | 273.302(d) | 50 |
| No Violation | Litter controlled/collected and barriers/fences in place. | 273.220(a)-(c) | 51 |
| COVER/SLOPES/REVEGETATION | | | |
| No Violation | Daily/intermediate cover meets performance and design requirements. Remark: | 273.232(b), 273.233(b), (c) | 52 |

| | | | |
|---------------------------------|---|----------------------------------|----|
| No Violation | Minimum 5 day supply of daily and intermediate cover maintained on-site. | 273.232(c) & 273.233(d) | 53 |
| No Violation | Intermediate cover applied within time limits. | 273.233(a) | 54 |
| No Violation | Intermediate slopes do not exceed 50%. | 273.232(d) | 55 |
| No Violation | Cap placed over entire surface of final lift meets performance standards. | 273.234(a)(1) | 56 |
| No Violation | Final cover meets performance and design requirements; applied within time limits. | 273.234(b)-(e) | 57 |
| No Violation | Final slopes stable and erosion controlled. | 273.234(f) | 58 |
| No Violation | Final slopes graded 3-15% or terraced to 33% as approved. | 273.234(g) | 59 |
| No Violation | Minimum revegetation and successful revegetation requirements adhered to. | 273.235(a)-(e) & 273.236(a), (b) | 60 |
| WATER QUALITY PROTECTION | | | |
| No Violation | Surface and groundwater treatment facilities properly operated and maintained. | 273.241(b) | 61 |
| No Violation | Surface water percolation minimized/prevented. | 273.242(b)(1) & 273.234(e)(4) | 62 |
| No Violation | Soil erosion and sedimentation controls designed and implemented as per approved plans; gullies over nine inches repaired. Remark: | 273.242(a)-(c) | 63 |
| No Violation | Sedimentation ponds and discharge structures designed, constructed, operated, and maintained in accordance with Chapters 273, 102, and 105. | 273.243(a)-(g) & 273.244 | 64 |
| LINER SYSTEM | | | |

| | | | |
|---------------------------|--|-----------------|----|
| No Violation | Liner system designed, constructed, operated, and maintained when required. | 273.251(a), (b) | 65 |
| No Violation | Edge of liner requirements adhered to (i.e., no waste within 25 feet if adjacent liner, 4 feet high lined berm, to prevent lateral escape of leachate, adequate spacing on inside of berm to collect stormwater and sediment). | 273.252(d) | 66 |
| No Violation | Leachate detection zone monitored weekly. | 273.255(c) | 67 |
| No Violation | Protective cover protects primary liner and leachate collection system and allows free flow of leachate into the collection system. | 273.257(a) | 68 |
| No Violation | Protective cover meets minimum requirements and at least 18 inches thick. | 273.257(b) | 69 |
| No Violation | Leachate collection system within protective cover meets minimum requirements. | 273.258(a), (b) | 70 |
| No Violation | Barrier designed, constructed and maintained as required to prevent lateral migration of leachate off-site in surface mined areas. | 273.259(a)-(d) | 71 |
| No Violation | 8 feet of select waste placed over protective cover. | 273.260 | 73 |
| LEACHATE TREATMENT | | | |
| No Violation | Leachate collected and handled through Department approved method(s). | 273.272(a)-(c) | 74 |
| Not Applicable | Leachate transportation requirements adhered to. | 273.273(a)-(c) | 75 |
| No Violation | Cessation of site operation if alternate leachate handling not available. | 273.273(d) | 76 |

| | | | |
|------------------------------------|---|---------------------------|----|
| Not Applicable | Leachate treatment system permitted and fully operational at least 3 years before closure. | 273.273(e) | 77 |
| Not Applicable | Leachate recirculation in accordance with regulations. | 273.274(1)-(4) | 78 |
| No Violation | Leachate collection and storage systems on-site have capacity of 30 days or 250,000 gallons, whichever is greater. | 273.275(a)-(f) | 79 |
| No Violation | Leachate flow rate measured daily; analyzed quarterly. Remark: Monthly leachate flow for June 2025 was 740,746 gallons, or 30,347 gallons per day. | 273.276(a)-(b) | 80 |
| No Violation | Department notified when remedial action(s) required. | 273.277(1)-(4) | 81 |
| WATER QUALITY MONITORING | | | |
| No Violation | Approved monitoring system installed and maintained. | 273.281(a), (b) & 273.283 | 82 |
| No Violation | Quarterly and annual monitoring requirements adhered to and results submitted Department within time constraints. | 273.284 & 273.285 | 83 |
| No Violation | Groundwater assessment plan submitted and implement as required. | 273.286(a)-(g) | 84 |
| No Violation | Groundwater abatement plan submitted and implemented as required. | 273.287(a)-(f) | 85 |
| RECORDKEEPING AND REPORTING | | | |
| No Violation | Operational records maintained, available and submitted as required. | 273.288 & 273.311-273.313 | 86 |

| | | | |
|-----------------------------|--|-----------------|----|
| No Violation | Daily Operational Records kept in accordance with regulations for the life of the facility bond or longer if necessary. | 273.311(d) | 87 |
| No Violation | Operator submits quarterly operation report. | 273.312 | 88 |
| No Violation | Operator submits annual operation report with fee. | 273.313 | 89 |
| MINERALS AND GAS | | | |
| No Violation | Gas venting and monitoring in accordance with approved plans. | 273.292(a)-(d) | 90 |
| No Violation | Combustible gas levels not exceeded. | 273.292(e) | 91 |
| No Violation | Forced gas venting if required. | 273.292(f) | 92 |
| No Violation | Gas recovery conducted as per approved plan and §273.293, including annual analysis. | 273.293(a), (b) | 93 |
| EMERGENCY PROCEDURES | | | |
| No Violation | Contingency plan implemented if there is an emergency. | 273.303(a)-(c) | 94 |
| RECYCLING | | | |
| No Violation | Operator shall salvage and recycle waste in accord with recycling plan. (273.196) | 273.331(a) | 95 |
| No Violation | Salvaging and recycling controlled by operator and prevents interference within operations and prevents health hazardous nuisance. | 273.331(b) | 96 |
| No Violation | Salvaged materials stored in an approved area or transported offsite. | 273.331(c) | 97 |
| No Violation | Drop off center established for at least three recyclables. | 273.332(a) | 98 |

| | | | |
|---|---|-----------------|-----|
| No Violation | Drop off center properly located, contains bins or containers, open at least 8 hours per week and 4 hours during evenings or weekends. | 273.332(b), (c) | 99 |
| No Violation | Approved public notice of availability of drop off center availability is provided. | 273.332(d) | 100 |
| No Violation | On or before January 15 each year, operator informs municipality in writing of weight and type of materials recycled previous year. | 273.332(e) | 101 |
| SPECIAL HANDLING AND RESIDUAL WASTES | | | |
| No Violation | Special handling and residual wastes disposed with prior Department approval, and in accordance with permit and Chapter 273. | 273.501 | 102 |
| Not Applicable | Infectious waste disposal restrictions adhered to. | 273.511(a)-(d) | 103 |
| Not Applicable | Chemotherapeutic waste disposal restrictions adhered to. | 273.512 | 104 |
| No Violation | Sewage sludge co-disposal and monofill requirements followed. | 273.513 | 105 |
| No Violation | Sewage sludge sampling requirements adhered to and sludge meets standards for control of pathogens, vectors, and odors. | 273.513(c) | 106 |
| Not Applicable | Disposal of municipal waste incineration ash in landfill or landfill cell that meets Chapter 273 requirements. | 273.514(a) | 107 |
| Not Applicable | Ash residue disposal in dedicated landfill or landfill cell unless co-disposal in accordance with Chapter 273 (including leachability treatment). | 273.514(b) | 108 |

| | | |
|------------------------------|---|-------------|
| Not Applicable | Ash residue covered immediately or as 273.514(c) approved by the Department. | 109 |
| BONDING AND INSURANCE | | |
| No Violation | Bond filed with Department. | 271.312 110 |
| No Violation | Bond maintained in an amount and with 271.333(b) guarantees as required. | 111 |
| | Bond amount \$ | 111A |
| | Phased deposit due date | 111B |
| No Violation | Proof of a commercial policy of liability 271.374 insurances submitted to the Department as specified by 271.374. | 112 |
| | Policy # GEC003617613 | 112A |
| | Insurer (company name) Greenwich Insurance Company | 112B |
| | Expiration Date: 12/01/2025 | 112C |

Comments

On August 13, 2025 the PA Department of Environmental Protection ("the Department") conducted a complete routine inspection at Chrin Bros. Sanitary Landfill ("Chrin"). Representing the Department was Ed McNulty ("this inspector"). Representing Chrin was Joseph Klobusicky who provided a site tour and was interviewed on behalf of Chrin.

A pre-entry odor patrol was conducted in the vicinity of Chrin. Sewage odors were observed in and near the entrance to the Cedar Park Apartments, this inspector attributed these odors to the treatment plant. No landfill related odors were observed.

The following Department personnel have entered the landfill since the last inspection on S. Clark on 7/16/25 and T. McGurk on 7/16/25.

Roads inside the landfill were OK, water trucks were wetting the road for dust control. Line odor misters were in operation on fences along the haul road and at the entrance. One of Chrin's weight scales had its plates replaced recently.

The working face was in Stage 7, Chrin was operating 2 track loaders, 1 compactor, and 1 truck mounted odor mister. Waste was being hosed with deodorizer.

No windblown litter was observed around the working face. Some ponding of water was observed at the exit of the working face. See attached photo.

Excavation in stage 10, part of the eastern expansion, was active and material was being screened. New sections of the MSE wall had been added since the last inspection. The old leachate tank near the east expansion will be removed in the near future.

Flare 3 was active, flare 4 was active. Flare 3 was operating at 1770 °F and flowing 1117 scfm. Flare 4 was operating at 1772°F and was flowing 1286 scfm.

Since the last inspector report was issued on 8/8/25 Chrin Landfill received no odor complaints. Odor patrol was conducted on 8/13/25.

Check List Comments

Line Item 13 - Approved means of measuring and inspected waste utilized.

Remark: Chrin's weight scale was last calibrated 7/23/25, Chrin recorded 65 overweight trucks in July 2025

Line Item 23 - Operator implements nuisance minimization and control plan to minimize and

control other conditions harmful to the environment or public health, or which create safety hazards, odors, dirt, noise, unsightliness and other public nuisances.

Remark: Chrin's nuisance load log and patrol log were reviewed. Patrols were being conducted in accordance with their nuisance minimization and control plan. No nuisance loads were recorded since the last inspection.

Line Item 24 - Operator does not receive solid waste at a landfill in excess of the maximum or average daily volume approved in the permit.

Remark: Daily incoming volumes were reviewed for July 2025. The highest incoming tonnage for July was 854.1 tons on 7/1/25.

Line Item 26 - Operator monitors incoming waste in accordance with Department's guidance or in a manner at least as protective of the environment, facility staff and public health and safety.

Remark: Daily Radiation source checks were reviewed since the last inspection. Chrin recorded one radiation hit on 8/13/25. Lu-177, Origin: Holland Disposal (MSW hauling).

Line Item 30 - Monitoring equipment is calibrated at frequency specified by manufacturer, but not less than once a year.

Remark: Chrin's stationary and handheld radiation meters were calibrated on 7/8/25 and 7/9/25, respectively.

Line Item 80 - Leachate flow rate measured daily; analyzed quarterly.

Remark: Monthly leachate flow for June 2025 was 740,746 gallons, or 30,347 gallons per day.

INSPECTION IMAGES



Photo #1: Pool of sitting water at exit of working face.

Inspection Report Signature Page

This inspection report is notice of the findings of an inspection conducted by a representative of the Department. This report is formal notification of any violations observed during the inspection. Additional notification of violations may be issued concerning either Violations noted herein, or other violations identified as a result of review of laboratory analyses. This report does not constitute an order or other appealable action of the Department. Nothing contained herein shall be deemed to grant or imply immunity from legal action for any violation noted herein. Signature by the persons interviewed does not necessarily imply concurrence with the findings of this report, but does acknowledge that the person was shown the report or that a copy was left with the person.

Signatures

Person

Interviewed

Unable To Obtain Reason: Delivered via email

Date --/--/----

Inspector



Date 08/20/2025

Investigator: E. McNulty Date: 8-13-25 CASE: Chrin
 Weather Conditions: 84°F Partly Cloudy, winds 5 mph SSW - 73% Humidity ODOR PATROL SURVEY

| SURVEY LOCATION | TIME | ODOR INTENSITY | ODOR DURATION | ODOR DESCRIPTION | eFACTS # 4037593 COMMENTS & OBSERVATIONS |
|---------------------------|-------|---|--|--|---|
| | | S = Strong M = Moderate SL = Slight N = None | P = Persistent I = Intermittent N = None | EG = Rotten Egg LFG = Landfill Gas G = Garbage S = Sewage D = Dredge O = Other (describe) | |
| I-28 | 10:10 | N | N | | |
| MHR x Ind. | 10:13 | N | N | | |
| Cedarville Rd | 10:14 | M | I | S | Sewage odor near entrance of Cedar park- |
| Knollwood Dr | 10:16 | M | I | S | apartments |
| Cedar Park Blvd | 10:18 | M | I | S | Recycling pickup currently present |
| Cedarville (Sewage Plant) | 10:23 | N | N | | |
| Congressional | 10:28 | N | N | | |
| Clubhouse | 10:29 | N | N | | |
| Turnberry | 10:30 | N | N | | |
| Pinehurst | 10:35 | N | N | | |
| Beth Page | 10:36 | N | N | | |
| S.F. Andrews | 10:36 | N | N | | |
| Old Course | 10:36 | N | N | | |
| Oak Hill | 10:38 | N | N | | |
| Valley view | 10:39 | N | N | | |
| Spring Valley | 10:45 | N | N | | |
| Waltman loop ↕ | 10:48 | N | N | | |
| Mountain top | 10:47 | N | N | | |

Investigator: Ed McWhorter

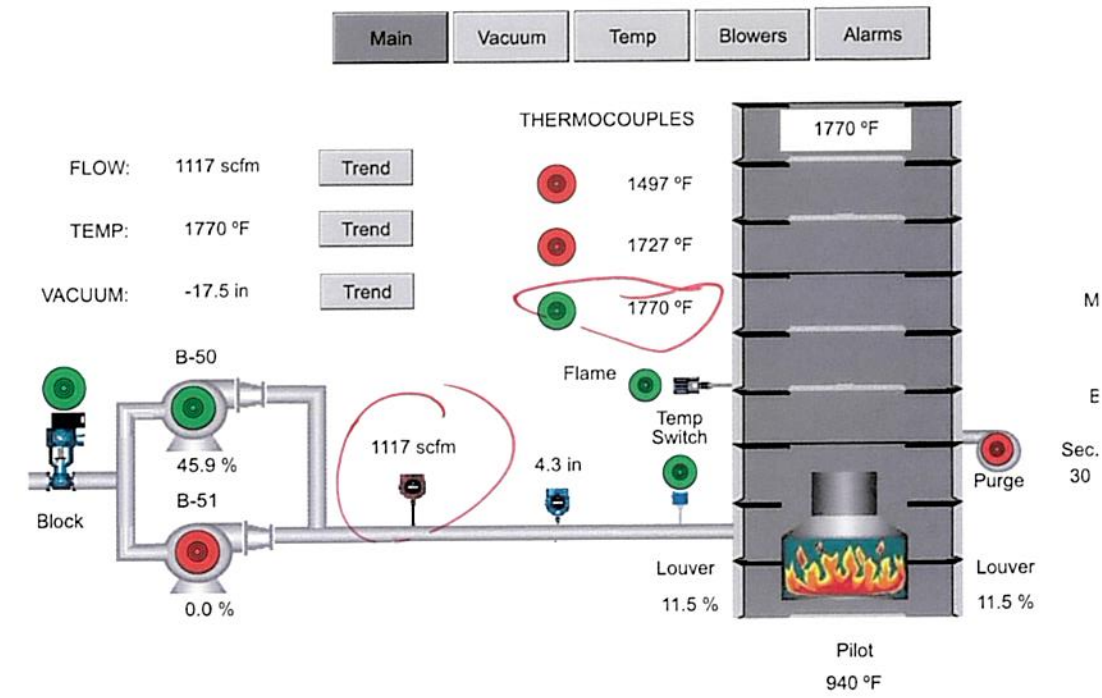
Date: 8-13-25

CASE: Chris

ODOR PATROL SURVEY

[illegible]

CHIRIN LANDFILL - FLARE #3



Start / Stop

Reset

Start

Stop

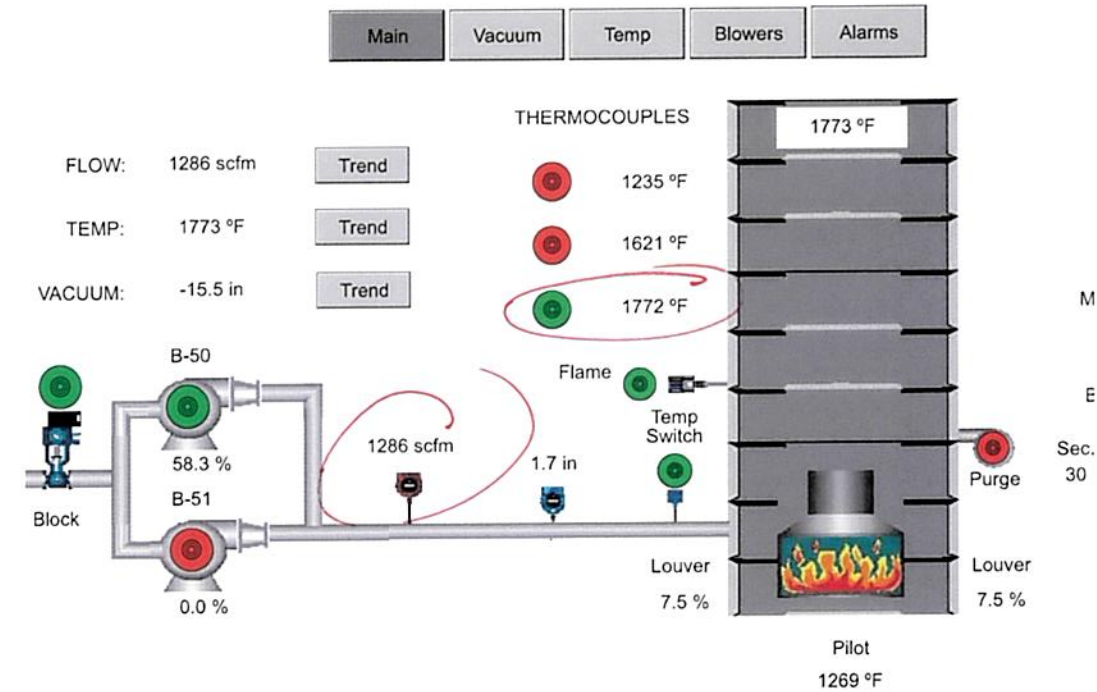
Start-up in Initiated:

Gas Flow Initiated

E-STOP Latched

Common Fault

CHRIN LANDFILL - FLARE #4



Start / Stop

Reset

Start

Stop

Start-up in Initiated:

E-STOP Latched

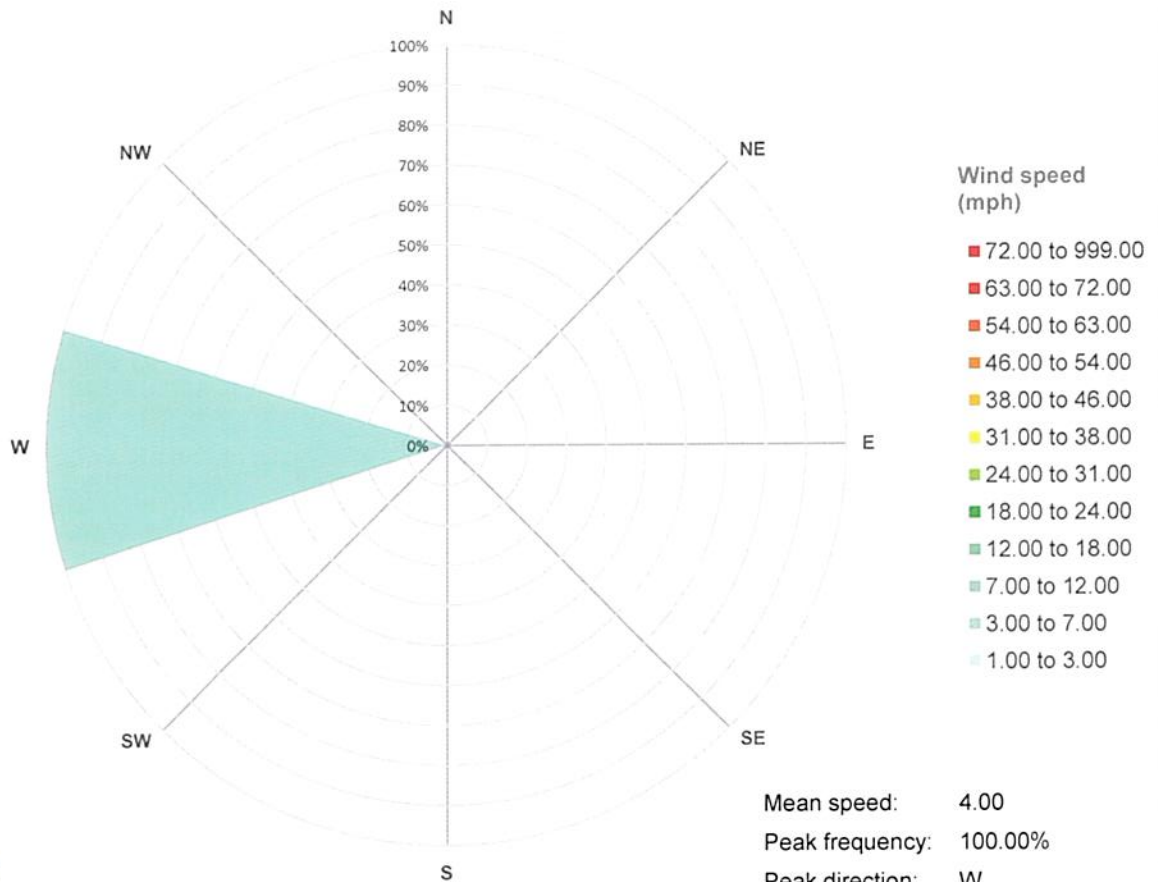
Common Fault

Gas Flow Initiated



Chrin Landfill

Wednesday, August 13, 2025 - 11:30am



Temp - 86
WS - 4mph
WD - West
Rh - 69%
BP - 29.55

| 2024 | Daily | Total Week | Month Average | Day | Total Month | |
|--------------------|---------|------------|---------------|-----|-------------|----------|
| July | | | | | | |
| 1 | 854.1 | 2,539.59 | 854.1 | 1 | 854.1 | 854.1 |
| 2 | 754.7 | | 804.4 | 2 | 1,608.8 | 1,608.8 |
| 3 | 618.8 | | 742.5 | 3 | 2,227.6 | 2,227.6 |
| 4 | Holiday | | | | 2,227.6 | 2,227.6 |
| 5 | 312.0 | | 556.9 | 4 | 2,227.6 | 2,539.6 |
| 6 | | | | | 2,539.6 | 2,539.6 |
| 7 | 822.2 | | 507.9 | 5 | 2,539.6 | 3,361.8 |
| 8 | 757.2 | 3,697.15 | 560.3 | 6 | 3,361.8 | 4,119.0 |
| 9 | 675.8 | | 588.4 | 7 | 4,119.0 | 4,794.7 |
| 10 | 655.2 | | 599.3 | 8 | 4,794.7 | 5,449.9 |
| 11 | 669.0 | | 605.5 | 9 | 5,449.9 | 6,118.9 |
| 12 | 117.8 | | 611.9 | 10 | 6,118.9 | 6,236.7 |
| 13 | | | | | 6,236.7 | 6,236.7 |
| 14 | 710.2 | | 567.0 | 11 | 6,236.7 | 6,946.9 |
| 15 | 715.5 | 3,474.51 | 578.9 | 12 | 6,946.9 | 7,662.4 |
| 16 | 647.3 | | 589.4 | 13 | 7,662.4 | 8,309.8 |
| 17 | 681.5 | | 593.6 | 14 | 8,309.8 | 8,991.2 |
| 18 | 605.4 | | 599.4 | 15 | 8,991.2 | 9,596.6 |
| 19 | 114.6 | | 599.8 | 16 | 9,596.6 | 9,711.3 |
| 20 | | | | | 9,711.3 | 9,711.3 |
| 21 | 722.8 | | 571.3 | 17 | 9,711.3 | 10,434.0 |
| 22 | 678.3 | 3,340.69 | 579.7 | 18 | 10,434.0 | 11,112.3 |
| 23 | 618.3 | | 584.9 | 19 | 11,112.3 | 11,730.6 |
| 24 | 605.4 | | 586.5 | 20 | 11,730.6 | 12,336.0 |
| 25 | 638.2 | | 587.4 | 21 | 12,336.0 | 12,974.2 |
| 26 | 77.8 | | 589.7 | 22 | 12,974.2 | 13,051.9 |
| 27 | | | | | 13,051.9 | 13,051.9 |
| 28 | 765.1 | | 567.5 | 23 | 13,051.9 | 13,817.0 |
| 29 | 711.0 | | 575.7 | 24 | 13,817.0 | 14,528.0 |
| 30 | 569.4 | | 581.1 | 25 | 14,528.0 | 15,097.4 |
| 31 | 631.3 | | 604.9 | 26 | 15,728.7 | 15,728.7 |
| Month Total | | | | | | |
| 15,728.7 | | | | | | |

Chrin Brothers Sanitary Landfill 2024 Leachate Flow Summary

Leachate

| Reading Date | Month | Reading | Monthly Flow | Gallons Per Day | GPD Per Acre | Quarterly Flows | | |
|-------------------|-------|-----------|--------------|-----------------|--------------|-----------------|---------|--------|
| | | | | | | Flow | Gal/Day | GPD/Ac |
| 12/31/2024 | DEC | 574,400 | 255,158 | | | | | |
| 1/31/2025 | JAN | 1,335,733 | 761,333 | 24,559 | 233 | | | |
| 2/28/2025 | FEB | 337,394 | 448,206 | 16,007 | 152 | | | |
| 3/31/2025 | MAR | 1,249,556 | 912,162 | 29,425 | 279 | 2,121,701 | 23,574 | 223 |
| 4/30/2025 | APR | 2,319,031 | 1,069,475 | 35,649 | 338 | | | |
| 5/31/2025 | MAY | 3,633,618 | 1,314,587 | 42,406 | 402 | | | |
| 6/30/2025 | JUN | 380,517 | 1,019,178 | 33,973 | 322 | 3,403,240 | 37,398 | 354 |
| 7/31/2025 | JUL | 1,321,263 | 940,746 | 30,347 | 287 | | | |
| 8/31/2025 | AUG | 0 | | 0 | 0 | | | |
| 9/30/2025 | SEP | 0 | 0 | 0 | 0 | 940,746 | 10,226 | 97 |
| 10/31/2025 | OCT | 0 | 0 | 0 | 0 | | | |
| 11/30/2025 | NOV | 0 | | 0 | 0 | | | |
| 12/31/2026 | DEC | 0 | 0 | 0 | 0 | 0 | 0 | 0 |
| Total Yearly Flow | | | | 0 | 0 | | | |

meter reset

meter reset

1. There are 105.6 acres of area contributing to the leachate flows, 30 acres of the old unlined landfill and 75.6 acres of lined landfill.
2. Chrin changed flowmeters and the sewer discharge location to MH-2 on April 7, 2014.

CHRIN ODOR COMPLAINT LOG (1225 Industrial Dr., Easton, PA 18042)

| Date | Time | Address | Distance from Landfill (miles) | Weather Data (Allentown KABE) www.wunderground.com | | | Residence / Drive-by | Description / Notes | Gas Management Data | | | | | Date of Initial Response | Addressed in Insp Report Dated |
|----------|-------|--------------------------|--------------------------------|---|----------------|-------------------------|----------------------|--|---------------------|----------------|----------------|------------|--------------|--------------------------|--------------------------------|
| | | | | Skies | Temperature °F | Wind (out of) | | | Flare 1 (scfm) | Flare 3 (scfm) | Flare 4 (scfm) | PPL (scfm) | Total (scfm) | | |
| 01/17/25 | 9:19 | unknown | unknown | | 28 | East/Southeast 0-1 mph | Residence | Every morning for the past year+ between the hours of roughly 7am-10 am and in early evening hours my neighborhood has overwhelming smell of methane gas. The belief is this odor is off gassing form the Chrin landfill. This has been a noticeable problem for the past year or so at least. I have acute asthma and suffer lung irritation and burning as a result of this when exercising or working outside during periods when the odor is level is high. I fear a toxic situation exists. | | | 2300 | | 2300 | 01/21/25 | 01/21/25 |
| 01/20/25 | 8:33 | Morgan Hill Rd., Easton | 1.390 | | 15 | Northeast 0-2 mph | Residence | The dump smells terrible again. | | | 2500 | | 2500 | 01/21/25 | 01/21/25 |
| 02/10/25 | 2:30 | Merion Ln., Easton | 1.744 | | 30 | South 0-1mph | Residence | At about 2:30 in the morning the landfill stunk so bad that the smell came in through my open window. | | | 2540 | | 2540 | 02/14/25 | 02/19/25 |
| 02/26/25 | 16:13 | Waltman Loop | 0.943 | | 53 | South/southwest 0-1mph | Residence | Garbage and methane smell. At home. | | | 2610 | | 2610 | 03/11/25 | 03/21/25 |
| 04/03/25 | 10:44 | Merion Ln., Easton | 1.744 | | 49 | South 0-1mph | Residence | Smelled odor from Chrin. At 10:44 AM while leaving the house. | | 1900 | | | 1900 | 04/04/25 | 03/21/25 |
| 04/16/25 | 14:15 | Pine Valley Ter., Easton | 1.297 | | 48 | Southwest 2-5 mph | Residence | Smells like rotten egg gas. The odor has been getting more frequent. Encountered since 2:15 PM at home. | | 1800 | | | 1800 | 05/13/25 | 05/13/25 |
| 07/05/25 | 9:07 | Morgan Hill Rd., Easton | 1.390 | | 69 | South/southwest 0-2 mph | Residence | Bad odor coming from landfill. At home. | | 890 | 1280 | | 2170 | 07/08/25 | 06/10/25 |

Electronic File Distribution:

Facility

Williams Township

R. Bellas/R. Miller

AQ: R. Mullin/ M. Bardzilouskas/C. Ostrowski

M. Glogowski

R. Malizia

A. Faulch

Chrin: Joseph Klobusicky

jklobusicky@chrin.org

Williams Township: Melody Ernst

mernst@williamstwp.org