

Municipal Waste Landfill Inspection Report

| | | | |
|-------------------------------|------------------------------------|----------------------------|----------------------|
| Permit Number | 100022 | EPA ID Number | ---- |
| Facility Name | CHRIN BROS SANI LDFL | Operator Name | CHRIN BROS INC |
| Address | 1225 INDUSTRIAL DR | Address | 1225 INDUSTRIAL DR |
| City/State/Zip | EASTON PA 18042-6829 | City/State/Zip | EASTON PA 18042-6829 |
| Municipality | Williams Township | County | Northampton |
| Responsible Official | Gregory Chrin | Title | Owner/ Operator |
| Person Interviewed | Tom McMonigle | Title | Site Engineer |
| | | Telephone # | 1 |
| Lead Inspector | AMY E FAULCH | Title | SLD WSTE SUPV |
| Site ID | 238053 | Client ID | 42952 |
| PF ID | 240650 | SF ID | 201820 |
| Inspection Start Date | 03/29/2024 10:28 AM | Inspection End Date | 03/29/2024 12:00 PM |
| Inspection Type | RTNC - Routine/Complete Inspection | Inspection Result | No Violations Noted |
| Permit Expiration Date | 01/06/2030 | Days/Week Operated | 6 |
| | | Max. Daily Volume | 2000 Tons/Day |

Check Lists

| Municipal Waste Landfill (0131) | | | |
|---------------------------------|---|------------------|-----------|
| Status | Requirement | Chapter Citation | Line Item |
| GENERAL PROVISIONS | | | |
| No Violation | Required insurance in effect | 271.371 | 1 |
| | (expiration date) 12/01/2024 | | 1A |
| No Violation | Operation in accordance with approved plans and permit. | 273.201(c)(2) | 2 |
| No Violation | Operation within permit boundaries (vertical and horizontal). | 273.201(c)(2) | 3 |
| No Violation | Disposal Timing and sequence as per Section 273.112(1). | 273.201(c)(2) | 4 |
| No Violation | No unapproved wastes or liquids. | 273.201(d)-(m) | 5 |

| | | | |
|-------------------------|---|-----------------|----|
| No Violation | Isolation distances are adhered to. | 273.202(a) | 6 |
| No Violation | Facilities certification requirements followed. | 273.203(a), (b) | 7 |
| No Violation | Written Department approval of new construction prior to waste disposal. | 273.203(c) | 8 |
| DAILY OPERATIONS | | | |
| No Violation | Proper signs posted. | 273.211(a) | 9 |
| No Violation | Site perimeter clearly marked and grid coordinate system in use. | 273.211(b)-(d) | 10 |
| No Violation | Proper barriers installed around site and access controlled when attendant not present. | 273.212(a)-(i) | 11 |
| No Violation | Access roads maintained and negotiable by collection vehicles. | 273.213(a)-(i) | 12 |
| No Violation | Approved means of measuring and inspected waste utilized. | 273.214(a), (b) | 13 |
| No Violation | Adequate equipment on-site and stand-by equipment available. | 273.215(a), (b) | 14 |
| No Violation | Vehicles directed promptly to unloading area and promptly unloaded. | 273.216(a), (b) | 15 |
| No Violation | Solid waste spread and compacted as approved by Department as part of permit. | 273.216(c) | 16 |
| No Violation | Operator implements fugitive air contaminant control/measures and prevents and controls air pollution including no exceeding of ambient air quality standards, no open burning, and minimizing generation of fugitive dust emissions from facility. | 273.217(a) | 17 |
| No Violation | Operator complies with Air Quality Plan approval and Air quality Operating Permit. | 273.217(b) | 18 |
| No Violation | Operator does not cause or allow attraction, harborage, or breeding of vector. | 273.218(a) | 19 |
| No Violation | Operator implements nuisance minimization and control plan. | 273.218(b)(1) | 20 |
| No Violation | Operator performs regular, frequent, and comprehensive site inspections to reduce potential for offsite odors. | 273.218(b)(2) | 21 |

| | | | |
|--------------|---|---------------|----|
| No Violation | Operator promptly addresses and correct problems and deficiencies discovered during inspections. | 273.218(b)(3) | 22 |
| No Violation | Operator implements nuisance minimization and control plan to minimize and control other conditions harmful to the environment or public health, or which create safety hazards, odors, dirt, noise, unsightliness and other public nuisances. Remark: Chrin's daily odor patrol and nuisance load logs were reviewed. Chrin was also operating their perimeter line odor control misters at the time of this inspection. Chrin's odor patrols and odor control measures appear to be in accordance with their nuisance minimization and control plan. | 273.218(c) | 23 |
| No Violation | Operator does not receive solid waste at a landfill in excess of the maximum or average daily volume approved in the permit. Remark: Daily tonnages were reviewed since the last inspection. There were no exceedances of the 2,000 ton daily limit. The greatest one-day tonnage in February was 640 tons on 2/14/23, and the greatest one-day tonnage in March was 740 tons on 3/29/24. | 273.221(a) | 24 |
| No Violation | Operator implements radiation protection action plan. | 273.223(a) | 25 |
| No Violation | Operator monitors incoming waste in accordance with Department's guidance or in a manner at least as protective of the environment, facility staff and public health and safety. Remark: Daily radiation source checks were reviewed. Chrin has had no radiation hits since the last inspection. | 273.223(b) | 26 |
| No Violation | Radiation detector elements shall be as close as practical to wasteload and in appropriate geometry to monitor the waste. | 273.223(c) | 27 |
| No Violation | Operator has portable radiation monitors capable of determining the dose rate and presence of contamination of a vehicle that has caused an alarm. Upon exceedance of alarm level, a radiological survey of the vehicle is performed. | 273.223(d) | 28 |

| | | | |
|----------------|--|----------------|----|
| No Violation | Operator notifies Department immediately and isolates vehicle when radiation dose rates are exceeded. | 273.223(e) | 29 |
| No Violation | Monitoring equipment is calibrated at frequency specified by manufacturer, but not less than once a year. | 273.223(f) | 30 |
| No Violation | If radioactive material is detected, vehicle containing material shall not leave facility without written Department approval and an authorized federal Department of Transportation exemption form. | 273.223(g) | 31 |
| No Violation | Uniform cover of the approved daily cover material is placed on exposed solid waste at the end of each working day or at the end of every 24 hours, whichever interval is less. | 273.232(a) | 32 |
| No Violation | If intermediate cover requires revegetation, it is established within 30 days. | 273.233(e) | 33 |
| No Violation | Slopes constructed during daily landfilling and intermediate cover activities may not exceed 50 percent. | 273.233(f) | 34 |
| No Violation | Operator does not cause or allow waste pollution within or outside the site from operation of the facility. | 273.241(a)-(c) | 35 |
| Not Applicable | Operator has restored or replaced adversely affected water supply with an alternative source of like quantity and quality. | 273.245(a) | 36 |
| Not Applicable | Temporary water supply is provided within 48 hours. | 273.245(b) | 37 |
| Not Applicable | Permanent water supply is provided within 90 days. | 273.245(c) | 38 |
| No Violation | No waste 15 feet of inside top of the lined perimeter berm. | 273.252(e) | 39 |
| No Violation | Lined perimeter berm 4 ft. high constructed and maintained along edge of the lined disposal area. | 273.252(f) | 40 |
| No Violation | Edge of liner clearly marked. | 273.252(g) | 41 |
| Not Applicable | Alternate leachate recirculation method may be used if approved if one of the liner systems is a composite liner. | 273.274(b) | 42 |

| | | | |
|----------------------------------|--|-----------------------------|----|
| No Violation | Underground pipes used to transport leachate to leachate storage impoundments or tanks equipped with secondary containment or comply with 245.445. | 273.275(g) | 43 |
| Not Applicable | Operator isolates coal seams, coal outcrops and coal refuse from waste deposits to prevent combustion of waste and damage to liner. | 273.291(a) | 44 |
| Not Applicable | Mine openings within site sealed as approved by Department. | 273.291(b) | 45 |
| Not Applicable | Operator implements plan for controlling potential damage from subsidence submitted and approved under 273.120. | 273.291(c) | 46 |
| No Violation | Landfill designed, constructed, maintained and operated to prevent and minimize potential for fire, explosion, or release of solid waste constituents into air, water, or soil of the Commonwealth. | 273.301 | 47 |
| No Violation | Emergency equipment including portable fire extinguishers, fire control equipment, spill control equipment, and decontamination equipment available. For fire equipment requiring water, facility has a water supply of or adequate quantity and pressure to supply the equipment. | 273.302(a) | 48 |
| No Violation | Emergency equipment tested and maintained. | 273.302(c) | 49 |
| No Violation | Adequate space maintained to allow unobstructed movement of emergency personnel and equipment. | 273.302(d) | 50 |
| No Violation | Litter controlled/collected and barriers/fences in place. | 273.220(a)-(c) | 51 |
| COVER/SLOPES/REVEGETATION | | | |
| No Violation | Daily/intermediate cover meets performance and design requirements. | 273.232(b), 273.233(b), (c) | 52 |
| No Violation | Minimum 5 day supply of daily and intermediate cover maintained on-site. | 273.232(c) & 273.233(d) | 53 |
| No Violation | Intermediate cover applied within time limits. | 273.233(a) | 54 |
| No Violation | Intermediate slopes do not exceed 50%. | 273.232(d) | 55 |
| No Violation | Cap placed over entire surface of final lift meets performance standards. | 273.234(a)(1) | 56 |

| | | | |
|---------------------------------|--|----------------------------------|----|
| No Violation | Final cover meets performance and design requirements; applied within time limits. | 273.234(b)-(e) | 57 |
| No Violation | Final slopes stable and erosion controlled. | 273.234(f) | 58 |
| No Violation | Final slopes graded 3-15% or terraced to 33% as approved. | 273.234(g) | 59 |
| No Violation | Minimum revegetation and successful revegetation requirements adhered to. | 273.235(a)-(e) & 273.236(a), (b) | 60 |
| WATER QUALITY PROTECTION | | | |
| No Violation | Surface and groundwater treatment facilities properly operated and maintained. | 273.241(b) | 61 |
| No Violation | Surface water percolation minimized/prevented. | 273.242(b)(1) & 273.234(e) (4) | 62 |
| No Violation | Soil erosion and sedimentation controls designed and implemented as per approved plans; gullies over nine inches repaired. | 273.242(a)-(c) | 63 |
| No Violation | Sedimentation ponds and discharge structures designed, constructed, operated, and maintained in accordance with Chapters 273, 102, and 105. | 273.243(a)-(g) & 273.244 | 64 |
| LINER SYSTEM | | | |
| No Violation | Liner system designed, constructed, operated, and maintained when required. | 273.251(a), (b) | 65 |
| No Violation | Edge of liner requirements adhered to (i.e., no waste within 25 feet of adjacent liner, 4 feet high lined berm, to prevent lateral escape of leachate, adequate spacing on inside of berm to collect stormwater and sediment). | 273.252(d) | 66 |
| No Violation | Leachate detection zone monitored weekly. | 273.255(c) | 67 |
| No Violation | Protective cover protects primary liner and leachate collection system and allows free flow of leachate into the collection system. | 273.257(a) | 68 |
| No Violation | Protective cover meets minimum requirements and at least 18 inches thick. | 273.257(b) | 69 |
| No Violation | Leachate collection system within protective cover meets minimum requirements. | 273.258(a), (b) | 70 |

| | | | |
|------------------------------------|--|---------------------------|----|
| No Violation | Barrier designed, constructed and maintained as required to prevent lateral migration of leachate off-site in surface mined areas. | 273.259(a)-(d) | 71 |
| No Violation | 8 feet of select waste placed over protective cover. | 273.260 | 73 |
| LEACHATE TREATMENT | | | |
| No Violation | Leachate collected and handled through Department approved method(s). | 273.272(a)-(c) | 74 |
| Not Applicable | Leachate transportation requirements adhered to. | 273.273(a)-(c) | 75 |
| No Violation | Cessation of site operation if alternate leachate handling not available. | 273.273(d) | 76 |
| Not Applicable | Leachate treatment system permitted and fully operational at least 3 years before closure. | 273.273(e) | 77 |
| Not Applicable | Leachate recirculation in accordance with regulations. | 273.274(1)-(4) | 78 |
| No Violation | Leachate collection and storage systems on-site have capacity of 30 days or 250,000 gallons, whichever is greater. | 273.275(a)-(f) | 79 |
| No Violation | Leachate flow rate measured daily; analyzed quarterly. | 273.276(a)-(b) | 80 |
| No Violation | Department notified when remedial action(s) required. | 273.277(1)-(4) | 81 |
| WATER QUALITY MONITORING | | | |
| No Violation | Approved monitoring system installed and maintained. | 273.281(a), (b) & 273.283 | 82 |
| No Violation | Quarterly and annual monitoring requirements adhered to and results submitted Department within time constraints. | 273.284 & 273.285 | 83 |
| No Violation | Groundwater assessment plan submitted and implement as required. | 273.286(a)-(g) | 84 |
| No Violation | Groundwater abatement plan submitted and implemented as required. | 273.287(a)-(f) | 85 |
| RECORDKEEPING AND REPORTING | | | |
| No Violation | Operational records maintained, available and submitted as required. | 273.288 & 273.311-273.313 | 86 |

| | | | |
|-----------------------------|--|-----------------|-----|
| No Violation | Daily Operational Records kept in accordance with regulations for the life of the facility bond or longer if necessary. | 273.311(d) | 87 |
| No Violation | Operator submits quarterly operation report. | 273.312 | 88 |
| No Violation | Operator submits annual operation report with fee. | 273.313 | 89 |
| MINERALS AND GAS | | | |
| No Violation | Gas venting and monitoring in accordance with approved plans. | 273.292(a)-(d) | 90 |
| No Violation | Combustible gas levels not exceeded. | 273.292(e) | 91 |
| No Violation | Forced gas venting if required. | 273.292(f) | 92 |
| No Violation | Gas recovery conducted as per approved plan and §273.293, including annual analysis. | 273.293(a), (b) | 93 |
| EMERGENCY PROCEDURES | | | |
| No Violation | Contingency plan implemented if there is an emergency. | 273.303(a)-(c) | 94 |
| RECYCLING | | | |
| No Violation | Operator shall salvage and recycle waste in accord with recycling plan. (273.196) | 273.331(a) | 95 |
| No Violation | Salvaging and recycling controlled by operator and prevents interference within operations and prevents health hazardous nuisance. | 273.331(b) | 96 |
| No Violation | Salvaged materials stored in an approved area or transported offsite. | 273.331(c) | 97 |
| No Violation | Drop off center established for at least three recyclables. | 273.332(a) | 98 |
| No Violation | Drop off center properly located, contains bins or containers, open at least 8 hours per week and 4 hours during evenings or weekends. | 273.332(b), (c) | 99 |
| No Violation | Approved public notice of availability of drop off center availability is provided. | 273.332(d) | 100 |
| No Violation | On or before January 15 each year, operator informs municipality in writing of weight and type of materials recycled previous year. | 273.332(e) | 101 |

SPECIAL HANDLING AND RESIDUAL WASTES

| | | | |
|----------------|---|----------------|-----|
| No Violation | Special handling and residual wastes disposed with prior Department approval, and in accordance with permit and Chapter 273. | 273.501 | 102 |
| Not Applicable | Infectious waste disposal restrictions adhered to. | 273.511(a)-(d) | 103 |
| Not Applicable | Chemotherapeutic waste disposal restrictions adhered to. | 273.512 | 104 |
| No Violation | Sewage sludge co-disposal and monofill requirements followed. | 273.513 | 105 |
| No Violation | Sewage sludge sampling requirements adhered to and sludge meets standards for control of pathogens, vectors, and odors. | 273.513(c) | 106 |
| Not Applicable | Disposal of municipal waste incineration ash in landfill or landfill cell that meets Chapter 273 requirements. | 273.514(a) | 107 |
| Not Applicable | Ash residue disposal in dedicated landfill or landfill cell unless co-disposal in accordance with Chapter 273 (including leachability treatment). | 273.514(b) | 108 |
| Not Applicable | Ash residue covered immediately or as approved by the Department. | 273.514(c) | 109 |

BONDING AND INSURANCE

| | | | |
|--------------|---|------------|------|
| No Violation | Bond filed with Department. | 271.312 | 110 |
| No Violation | Bond maintained in an amount and with guarantees as required. | 271.333(b) | 111 |
| | Bond amount \$ | | 111A |
| | Phased deposit due date | | 111B |
| No Violation | Proof of a commercial policy of liability insurances submitted to the Department as specified by 271.374. | 271.374 | 112 |
| | Policy # GEC003617612 | | 112A |
| | Insurer (company name) Greenwich Insurance Company | | 112B |
| | Expiration Date: 12/01/2024 | | 112C |

Comments

On March 29, 2024 the PA Department of Environmental Protection (“Department”) conducted a routine complete inspection at Chrin Bros. Sanitary Landfill (“Chrin”). Representing the Department was Amy Faulch (“this inspector”). Tom McMonigle provided a site tour and was interviewed on behalf of Chrin. See the 3/29/24 odor patrol log for weather details.

The following Department personnel entered the landfill since the last inspection on 2/16/24: A. Faulch and M. Thompson on 2/16/24; C. Harding on 3/13/24; Kryss Roberts on 3/21/24; and A. Faulch on 3/29/24.

SITE TOUR:

Prior to entering Chrin, this inspector conducted an odor patrol in the areas surrounding the facility. A very light, intermittent garbage odor was detected at the end of Spring Valley Rd. No other landfill-related odors were detected during this odor patrol. See the 3/29/24 odor patrol log for details.

Upon entry to the landfill, this inspector notified Mr. McMonigle of the offsite odor on Spring Valley Rd. One truck was dumping at the working face in 9B. A “fishy” garbage odor was detected in the immediate area. Excavated waste was also being placed as the “fluff” layer at the southern portion of 9B. Chrin’s perimeter line mister was in operation. Mr. McMonigle stated that he would also have the spray bar mister moved in line with the working face. Some gas odor was still detected along the southwest access road, and near the 9B entrance. The southern 9A/9B slopes were being recovered during this inspection.

The excavated waste area is also being graded for installation of temporary capping. Some cover sloughing was observed on the eastern slope; this area needs to be re-graded. A truckwash was in use along the northern access road. The 501 building demolition is almost complete.

ODOR COMPLAINTS:

Since the last inspection report from the 2/16/24 inspection was issued on 2/29/24, the Department received five odor complaints. Odor patrols were conducted by the Department on 3/22/24 (efacts # 3733104) and 3/29/24 (efacts # 3737792).

Check List Comments

Line Item 23 - Operator implements nuisance minimization and control plan to minimize and control other conditions harmful to the environment or public health, or which create safety hazards, odors, dirt, noise, unsightliness and other public nuisances.

Remark: Chrin's daily odor patrol and nuisance load logs were reviewed. Chrin was also operating their perimeter line odor control misters at the time of this inspection. Chrin's odor patrols and odor control measures appear to be in accordance with their nuisance minimization and control plan.

Line Item 24 - Operator does not receive solid waste at a landfill in excess of the maximum or average daily volume approved in the permit.

Remark: Daily tonnages were reviewed since the last inspection. There were no exceedances of the 2,000 ton daily limit. The greatest one-day tonnage in February was 640 tons on 2/14/23, and the greatest one-day tonnage in March was 740 tons on 3/29/24.

Line Item 26 - Operator monitors incoming waste in accordance with Department's guidance or in a manner at least as protective of the environment, facility staff and public health and safety.

Remark: Daily radiation source checks were reviewed. Chrin has had no radiation hits since the last inspection.

Inspection Report Signature Page

This inspection report is notice of the findings of an inspection conducted by a representative of the Department. This report is formal notification of any violations observed during the inspection. Additional notification of violations may be issued concerning either Violations noted herein, or other violations identified as a result of review of laboratory analyses. This report does not constitute an order or other appealable action of the Department. Nothing contained herein shall be deemed to grant or imply immunity from legal action for any violation noted herein. Signature by the persons interviewed does not necessarily imply concurrence with the findings of this report, but does acknowledge that the person was shown the report or that a copy was left with the person.

Signatures

| | | | |
|--------------------|---|------|------------|
| Person Interviewed | Unable To Obtain Reason: Sent via email. | Date | --/--/---- |
| Inspector |  | Date | 04/04/2024 |

Investigator: A. FaulichDate: 3/22/24CASE: Chrin LandfillWeather Conditions: Sunny, 32°F, wind N @ 4mph, 40% H

ODOR PATROL SURVEY

| SURVEY LOCATION | TIME | ODOR INTENSITY S = Strong M = Moderate SL = Slight N = None | ODOR DURATION P = Persistent I = Intermittent N = None | ODOR DESCRIPTION | COMMENTS & OBSERVATIONS |
|-------------------|------|---|---|--|-------------------------|
| | | | | EG = Rotten Egg LFG = Landfill Gas G = Garbage S = Sewage D = Dredge O = Other (describe) | |
| I-78 | 955 | N | | | eFACTS # 3733104 |
| MHRx Industrial | 957 | N | | | |
| Cederville | 958 | N | | | |
| Knollwood | 1000 | N | | | |
| Auburn | 1001 | N | | | |
| Sewage Trt. Plant | 1003 | N | | | |
| Congressional | 1005 | N | | | |
| Clubhouse | 1007 | N | | | |
| Turnberry | 1008 | N | | | |
| Merion | 1008 | N | | | |
| Town Water Tower | 1010 | N | | | |
| Clubhouse | 1011 | N | | | |
| Pinehurst | 1013 | N | | | |
| Pine Valley | 1014 | N | | | |
| Bethpage | 1016 | N | | | |
| Waterford | 1016 | N | | | |
| Prestwick | 1017 | N | | | |
| Old Course | 1017 | N | | | |

Investigator: A. FawcchDate: 3/22/24CASE: Chris Landfill

Weather Conditions: _____

ODOR PATROL SURVEY

| SURVEY LOCATION | TIME | ODOR INTENSITY S = Strong M = Moderate SL = Slight N = None | ODOR DURATION P = Persistent I = Intermittent N = None | ODOR DESCRIPTION | COMMENTS & OBSERVATIONS |
|---------------------------|------------------|---|---|--|---|
| | | | | EG = Rotten Egg LFG = Landfill Gas G = Garbage S = Sewage D = Dredge O = Other (describe) | |
| Oak St. Andrew | 10 ¹⁸ | N | | | |
| Oak Hill | 10 ¹⁹ | N | | | |
| Spring Valley | 10 ²⁰ | M / SL | 1 | O / LFG / G | moderate wood burning odor, very light garbage & gas odor @ end of strip |
| Chateau | 10 ²⁵ | N | | | |
| MHR | 10 ²⁸ | N | | | |
| MHR Industrial | 10 ²⁹ | N | | | |
| Industrial | 10 ³⁰ | N | | | |
| Morvale | 10 ³² | SL | 1 | O | wood burning odor |
| MHR | 10 ³⁵ | N | | | |
| Waltman Loop | 10 ³⁶ | N | | | |
| Mt. Top | 10 ³⁷ | N | | | |
| Spring Valley | 10 ³⁷ | N | | | |
| MHR | 10 ⁴⁰ | N | | | |
| | | | | | |
| | | | | | |
| | | | | | |
| | | | | | |

Investigator: A. Faulch Date: 3/29/20
 Weather Conditions: Sunny, 46°F, wind NW @ 13 mph

CASE: Chrrn Landfill
ODOR PATROL SURVEY

| SURVEY LOCATION | TIME | ODOR INTENSITY S = Strong M = Moderate SL = Slight N = None | ODOR DURATION P = Persistent I = Intermittent N = None | ODOR DESCRIPTION | COMMENTS & OBSERVATIONS |
|-------------------|------|---|---|--|-------------------------|
| | | | | EG = Rotten Egg LFG = Landfill Gas G = Garbage S = Sewage D = Dredge O = Other (describe) | |
| I-78 | 1028 | N | | | eFACTS# 3737792 |
| MHRV Industrial | 1031 | N | | | |
| Cedarville | 1032 | N | | | |
| Knollwood | 1034 | N | | | |
| Auburn | 1035 | N | | | |
| Sewage Trt. Plant | 1037 | N | | | |
| Congressional | 1040 | N | | | |
| Clubhouse | 1041 | N | | | |
| Turnberry | 1042 | N | | | |
| Merion | 1042 | N | | | |
| Water Tower | 1044 | N | | | |
| Clubhouse | 1045 | N | | | |
| Pinehurst | 1046 | N | | | |
| Pine Valley | 1048 | N | | | |
| Bethpage | 1049 | N | | | |
| Waterford | 1049 | N | | | |
| Prestwick | 1050 | N | | | |
| Old Course | 1050 | N | | | |

Investigator: A. FawcchDate: 3/29/24CASE: Chris Landfill

Weather Conditions: _____

ODOR PATROL SURVEY

| SURVEY LOCATION | TIME | ODOR INTENSITY | ODOR DURATION | ODOR DESCRIPTION | COMMENTS & OBSERVATIONS |
|------------------|------|---|--|--|--------------------------------------|
| | | S = Strong M = Moderate SL = Slight N = None | P = Persistent I = Intermittent N = None | EG = Rotten Egg LFG = Landfill Gas G = Garbage S = Sewage D = Dredge O = Other (describe) | |
| St. Andrews | 1051 | N | | | |
| Oak Hill | 1052 | N | | | |
| Spring Valley | 1054 | SL | I | G | very light garbage odor @ end of SVR |
| Mt. Top | 1101 | N | | | |
| Waltham Loop | 1101 | N | | | |
| Morgan Hill Rd | 1103 | N | | | |
| MHR x Industrial | 1105 | N | | | |
| Industrial | 1106 | N | | | |
| Morgan Le | 1109 | N | | | |
| Morgan Hill Rd | 1112 | N | | | |
| Spring Valley Rd | 1113 | SL | I | G | very light garbage odor @ end of SVR |
| Morgan Hill Rd | 1119 | N | | | |
| MHR x Industrial | 1120 | N | | | |
| Industrial | 1121 | N | | | |
| ENTER LAUDFILL | 1124 | | | | |
| | | | | | |
| | | | | | |
| | | | | | |

CHRIN BROTHERS LANDFILL

| 2024 | Daily | Total Week | Month Average | Day | Total Month | Total Quarter |
|-------------|---------|------------|---------------|-----|-------------|---------------|
| 2024 | Daily | Total Week | Month Average | Day | Total Month | Total Quarter |
| February | | | | | | |
| 1 | 477.7 | | 477.7 | 1 | 477.7 | 12,429.4 |
| 2 | 443.1 | | 460.4 | 2 | 920.8 | 12,872.5 |
| 3 | 58.3 | | 326.4 | 3 | 979.1 | 12,930.8 |
| 4 | | 2,556.60 | | | 979.1 | 12,930.8 |
| 5 | 506.9 | | 371.5 | 4 | 1,486.0 | 13,437.7 |
| 6 | 545.1 | | 297.2 | 5 | 1,486.0 | 13,437.7 |
| 7 | 471.0 | | 338.5 | 6 | 2,031.1 | 13,982.8 |
| 8 | 479.7 | | 357.4 | 7 | 2,502.1 | 14,453.8 |
| 9 | 490.0 | | 372.7 | 8 | 2,981.8 | 14,933.5 |
| 10 | 62.8 | | 385.8 | 9 | 3,471.8 | 15,423.5 |
| 11 | | 2,555.50 | | | 3,534.6 | 15,486.3 |
| 12 | 518.7 | | 353.5 | 10 | 3,534.6 | 15,486.3 |
| 13 | 13.4 | | 368.5 | 11 | 4,053.3 | 16,005.0 |
| 14 | 640.3 | | 338.9 | 12 | 4,066.7 | 16,018.4 |
| 15 | 483.2 | | 362.1 | 13 | 4,707.0 | 16,658.7 |
| 16 | 535.5 | | 370.7 | 14 | 5,190.2 | 17,141.9 |
| 17 | 121.3 | | 381.7 | 15 | 5,725.7 | 17,677.4 |
| 18 | | 2,312.42 | | | 5,847.0 | 17,798.7 |
| 19 | 529.0 | | 365.4 | 16 | 5,847.0 | 17,798.7 |
| 20 | 454.2 | | 375.1 | 17 | 6,376.0 | 18,327.7 |
| 21 | 442.5 | | 379.5 | 18 | 6,830.2 | 18,781.9 |
| 22 | 392.7 | | 382.8 | 19 | 7,272.7 | 19,224.4 |
| 23 | 453.6 | | 383.3 | 20 | 7,665.4 | 19,617.1 |
| 24 | 68.1 | | 386.6 | 21 | 8,119.0 | 20,070.7 |
| 25 | | 2,340.10 | | | 8,187.1 | 20,138.8 |
| 26 | 511.0 | | 372.1 | 22 | 8,187.1 | 20,138.8 |
| 27 | 468.0 | | 398.5 | 23 | 9,166.1 | 21,117.8 |
| 28 | 411.2 | | 399.1 | 24 | 9,577.3 | 21,529.0 |
| 29 | 393.7 | | 398.8 | 25 | 9,971.0 | 21,922.7 |
| Month Total | | | | | | |
| | 9,971.0 | | | | | |

CHRIN BROTHERS LANDFILL

| 2024 | Daily | Total Week | Month Average | Day | Total Month | Total Quarter |
|----------------------|-----------------|-----------------|---------------|-----|-------------|---------------|
| . | Daily | Total Week | Month Average | Day | Total Month | Total Quarter |
| March | | | | | | |
| 1 | 545.4 | | 545.4 | 1 | 545.4 | 22,468.1 |
| 2 | 84.2 | | 314.8 | 2 | 629.6 | 22,552.3 |
| 3 | | 2,413.50 | | | 629.6 | 22,552.3 |
| 4 | 659.1 | | 429.6 | 3 | 1,288.7 | 23,211.4 |
| 5 | 502.3 | | 447.8 | 4 | 1,791.0 | 23,713.7 |
| 6 | 551.1 | | 468.4 | 5 | 2,342.1 | 24,264.8 |
| 7 | 468.5 | | 468.4 | 6 | 2,810.6 | 24,733.3 |
| 8 | 560.5 | | 481.6 | 7 | 3,371.1 | 25,293.8 |
| 9 | 58.4 | | 428.7 | 8 | 3,429.5 | 25,352.2 |
| 10 | | 2,799.90 | | | 3,429.5 | 25,352.2 |
| 11 | 623.9 | | 450.4 | 9 | 4,053.4 | 25,976.1 |
| 12 | 540.7 | | 459.4 | 10 | 4,594.1 | 26,516.8 |
| 13 | 568.0 | | 469.3 | 11 | 5,162.1 | 27,084.8 |
| 14 | 503.3 | | 472.1 | 12 | 5,665.4 | 27,588.1 |
| 15 | 586.1 | | 480.9 | 13 | 6,251.5 | 28,174.2 |
| 16 | 87.6 | | 452.8 | 14 | 6,339.1 | 28,261.8 |
| 17 | | 2,909.59 | | | 6,339.1 | 28,261.8 |
| 18 | 531.7 | | 458.1 | 15 | 6,870.8 | 28,793.5 |
| 19 | 554.2 | | 464.1 | 16 | 7,425.0 | 29,347.7 |
| 20 | 579.7 | | 470.9 | 17 | 8,004.7 | 29,927.4 |
| 21 | 418.1 | | 467.9 | 18 | 8,422.8 | 30,345.5 |
| 22 | 595.9 | | 474.7 | 19 | 9,018.7 | 30,941.4 |
| 23 | 103.8 | | 456.1 | 20 | 9,122.5 | 31,045.2 |
| 24 | | 2,783.40 | | | 9,122.5 | 31,045.2 |
| 25 | 653.4 | | 465.5 | 21 | 9,775.9 | 31,698.6 |
| 26 | 606.9 | | 471.9 | 22 | 10,382.8 | 32,305.5 |
| 27 | 532.4 | | 474.6 | 23 | 10,915.2 | 32,837.9 |
| 28 | 439.4 | | 473.1 | 24 | 11,354.6 | 33,277.3 |
| 29 | 740.1 | | 483.8 | 25 | 12,094.7 | 34,017.4 |
| 30 | 57.2 | | 467.4 | 26 | 12,151.9 | 34,074.6 |
| 31 | | 3,029.40 | | | 12,151.9 | 34,074.6 |
| Month Total | 12,151.9 | | | | | |
| Quarter Total | 34,074.6 | | | | | |

Chrin Brothers Sanitary Landfill 2024 Leachate Flow Summary

Leachate

| Reading Date | Month | Reading | Monthly Flow | Gallons Per Day | GPD Per Acre | Quarterly Flows | | |
|-------------------|-------|-----------|--------------|-----------------|--------------|-----------------|---------|--------|
| | | | | | | Flow | Gal/Day | GPD/Ac |
| 12/31/2023 | DEC | 1,136,658 | 1,136,658 | | | | | |
| 1/31/2023 | JAN | 1,600,669 | 464,011 | 14,968 | 142 | | | |
| 2/28/2023 | FEB | 2,843,929 | 1,243,260 | 44,402 | 420 | | | |
| 3/31/2023 | MAR | 4,203,072 | 1,359,143 | 43,843 | 415 | 3,066,414 | 34,071 | 323 |
| 4/30/2023 | APR | 0 | -4,203,072 | -140,102 | -1,327 | | | |
| 5/31/2023 | MAY | 0 | 0 | 0 | 0 | | | |
| 6/30/2023 | JUN | 0 | 0 | 0 | 0 | -4,203,072 | -46,188 | -437 |
| 7/31/2023 | JUL | 0 | 0 | 0 | 0 | | | |
| 8/31/2023 | AUG | 0 | 0 | 0 | 0 | | | |
| 9/30/2023 | SEP | 0 | 0 | 0 | 0 | 0 | 0 | 0 |
| 10/31/2023 | OCT | 0 | 0 | 0 | 0 | | | |
| 11/30/2023 | NOV | 0 | 0 | 0 | 0 | | | |
| 12/31/2023 | DEC | 0 | 0 | 0 | 0 | 0 | 0 | 0 |
| Total Yearly Flow | | | 0 | 0 | 0 | | | |

1. There are 105.6 acres of area contributing to the leachate flows, 30 acres of the old unlined landfill and 75.6 acres of lined landfill.
2. Chrin changed flowmeters and the sewer discharge location to MH-2 on April 7, 2014.

Faulch, Amy

From: Faulch, Amy
Sent: Wednesday, March 6, 2024 12:38 PM
To: Joe Klobusicky
Subject: RE: [External] RE: Some drive-by Chrin complaints

Thank you Joe for following up.

Amy E. Faulch | Solid Waste Supervisor
Department of Environmental Protection | Waste Management
Bethlehem District Office
4530 Bath Pike | Bethlehem, PA 18017
Phone: 610.861.2063
www.depweb.state.pa.us

DEP is Going Paperless: To assist DEP in reaching this goal, the NERO Waste Management Program is requesting that **ALL documents** submitted to the Northeast Regional Office Waste Management Program, with the exception of documents submitted through the ePermitting or OnBase applications, be submitted by email as an attachment to this resource account ra-epwm-nero@pa.gov

From: Joe Klobusicky <jklobusicky@chrin.org>
Sent: Wednesday, March 6, 2024 9:35 AM
To: Faulch, Amy <a Faulch@pa.gov>
Subject: [External] RE: Some drive-by Chrin complaints

ATTENTION: This email message is from an external sender. Do not open links or attachments from unknown senders. To report suspicious email, use the [Report Phishing button in Outlook](#).

Hi Amy,
Thank you.

We were doing some additional gas work yesterday on the haul road near the entrance to 9B. That may be where it emanated from. We did have the work area closed up pretty good - I will meet with the field crew and see if they left anything open.

I did not get any gas odors when I came in today (off of route 78 around 5:30am) and no gas odors when I did the morning patrol either. They are working the 9B entrance area again today and we will monitor this closely. Saturday Feb 17th....we had no onsite work going on. No note of odors during the patrol. The working face and other projects are closed up for the weekends. I will double check with the crews though.

Joe k

From: Faulch, Amy <a Faulch@pa.gov>
Sent: Wednesday, March 6, 2024 9:29 AM
To: Joe Klobusicky jklobusicky@chrin.org.
Subject: Some drive-by Chrin complaints

Hi Joe,
FYI, I just wanted to pass on the following drive-by complaints I just received:

2/17/24 @ 9PM: Exiting the I-78, Chrin was persistent and strong until about the gas station.

3/5/34 @ 8:45 PM: Strong persistent gas from the offramp until the 3-way stop past the gas station.

For the one from last night, was anything going on with the gas collection system? Are you continuing to get on-site or offsite gas odors on your patrols?

Thank you,

Amy E. Faulch | Solid Waste Supervisor
Department of Environmental Protection | Waste Management
Bethlehem District Office
4530 Bath Pike | Bethlehem, PA 18017
Phone: 610.861.2063
www.depweb.state.pa.us

DEP is Going Paperless: To assist DEP in reaching this goal, the NERO Waste Management Program is requesting that ALL **documents** submitted to the Northeast Regional Office Waste Management Program, with the exception of documents submitted through the ePermitting or OnBase applications, be submitted by email as an attachment to this resource account ra-epwm-nero@pa.gov

Faulch, Amy

From: Joe Klobusicky <jklobusicky@chrin.org>
Sent: Wednesday, March 6, 2024 3:54 PM
To: Faulch, Amy
Subject: Fwd: [EXTERNAL] Daily Status Report
Attachments: Daily Report.pdf; Daily Report-FLR3.pdf

Hi Amy,
Here is additional information regarding the odor issue last night.

Joe k

Sent from my Verizon, Samsung Galaxy smartphone
Get [Outlook for Android](#)

From: Charlie R Chrin <charliec@chrin.org>
Sent: Wednesday, March 6, 2024 2:27:53 PM
To: Joe Klobusicky <jklobusicky@chrin.org>
Subject: Fw: [EXTERNAL] Daily Status Report

Joe,

In reference to any drive-by odor complaints yesterday/last night...flare 3 was substantially lower due to ongoing work on the 9A/9B footprint. The valving was reduced because of this, but was immediately rectified this morning first thing and the field adjusted.

Charles R. Chrin

Chrin Brothers Landfill
1225 Industrial Drive
Easton, PA 18042

(610) 258 8737 (Office)
(484) 544 9082 (Cell)



From: monitoring@earthres.com <monitoring@earthres.com>
Sent: Wednesday, March 6, 2024 5:07 AM

To: dhorvath@earthres.com <dhorvath@earthres.com>; CHrin@earthres.com <CHrin@earthres.com>

Subject: [EXTERNAL] Daily Status Report

CAUTION: This email originated from outside the organization. Do not click links or open attachments unless you recognize the source of this email and know the content is safe.

Gas Collection System Operational Status Report for 3/5/2024 is attached.



Chrin Landfill Daily Gas Collection
System Operations Report

3/5/2024
Daily Report

| FLARE 1 DATA | | |
|--------------|-------------------|------------------|
| | Flowrate (CFM) | Op. Temp. (F) |
| MIN: | 0 | -200 |
| MAX: | 0 | -200 |
| AVG: | 0 | -200 |

| FLARE 3 DATA | | | | | | |
|--------------|-------------------|-------------------|---------------------|--------------|----------------|---------------|
| | Flowrate (CFM) | Vacuum (In WC) | Pressure (In WC) | Temp. (F) | Methane (%) | Oxygen (%) |
| MIN: | 1119 | -24.5 | 4.2 | 1647 | 0.0 | 0.0 |
| MAX: | 1926 | -15.2 | 10.6 | 1759 | 0.0 | 0.0 |
| AVG: | 1352 | -21.7 | 6.0 | 1730 | 0.0 | 0.0 |

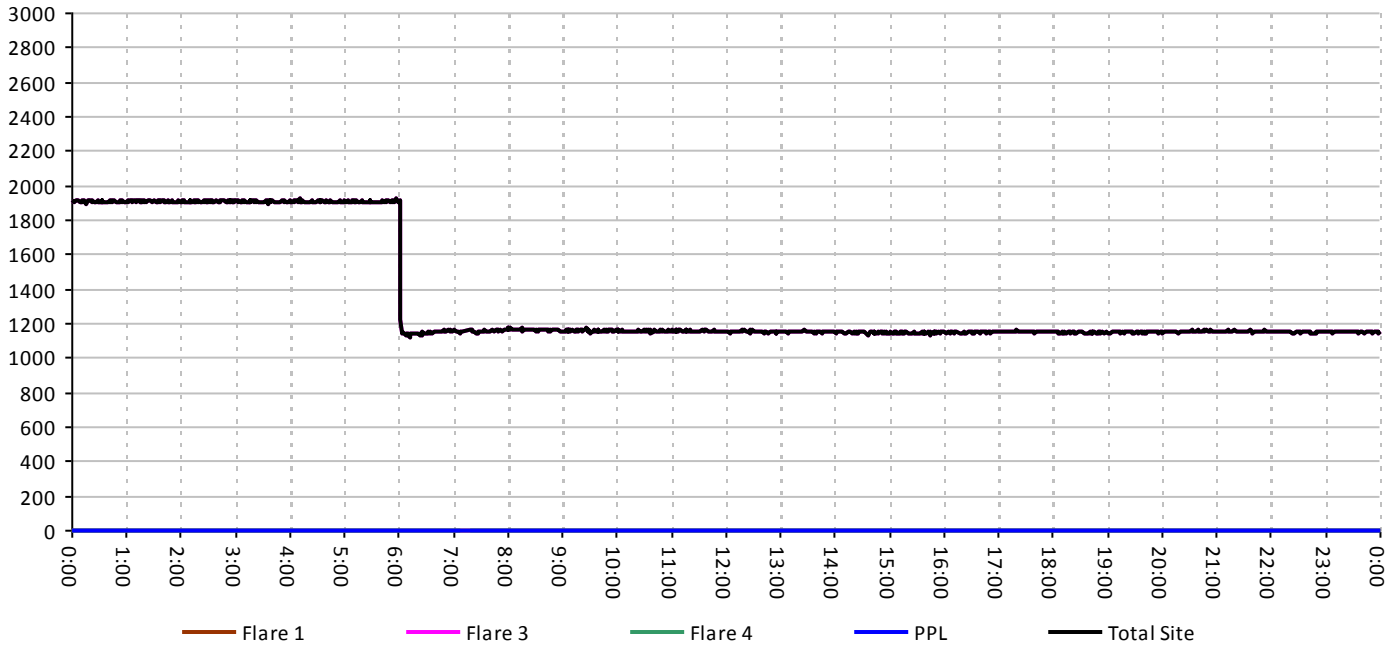
| DEVICE ONLINE TIME |
|----------------------|
| FLARE 1: 0 (min.) |
| FLARE 3: 1255 (min.) |
| FLARE 4: 0 (min.) |
| PPL: 0 (min.) |

| FLARE 4 DATA | | | | | | |
|--------------|-------------------|-------------------|---------------------|--------------|----------------|---------------|
| | Flowrate (CFM) | Vacuum (In WC) | Pressure (In WC) | Temp. (F) | Methane (%) | Oxygen (%) |
| MIN: | 0 | 0.4 | 0.0 | 41 | 0.0 | 0.0 |
| MAX: | 0 | 0.6 | 0.2 | 46 | 0.0 | 0.0 |
| AVG: | 0 | 0.5 | 0.2 | 44 | 0.0 | 0.0 |

| SYSTEM ALERTS |
|---------------------------------|
| FLARE 1: Shutdown Recorded |
| FLARE 3: No Shutdowns Recorded |
| FLARE 4: Shutdown Recorded |
| PPL: Pipeline Shutdown Recorded |

| PPL PIPELINE DATA | | | | | |
|-------------------|-------------------|---------------------|--------------|----------------|---------------|
| | Flowrate (CFM) | Pressure (In WC) | Temp. (F) | Methane (%) | Oxygen (%) |
| MIN: | 0 | 0.0 | 0 | 0.0 | 0.0 |
| MAX: | 0 | 0.0 | 0 | 0.0 | 0.0 |
| AVG: | 0 | 0.0 | 0 | 0.0 | 0.0 |

Flow Rate (scfm) vs Time



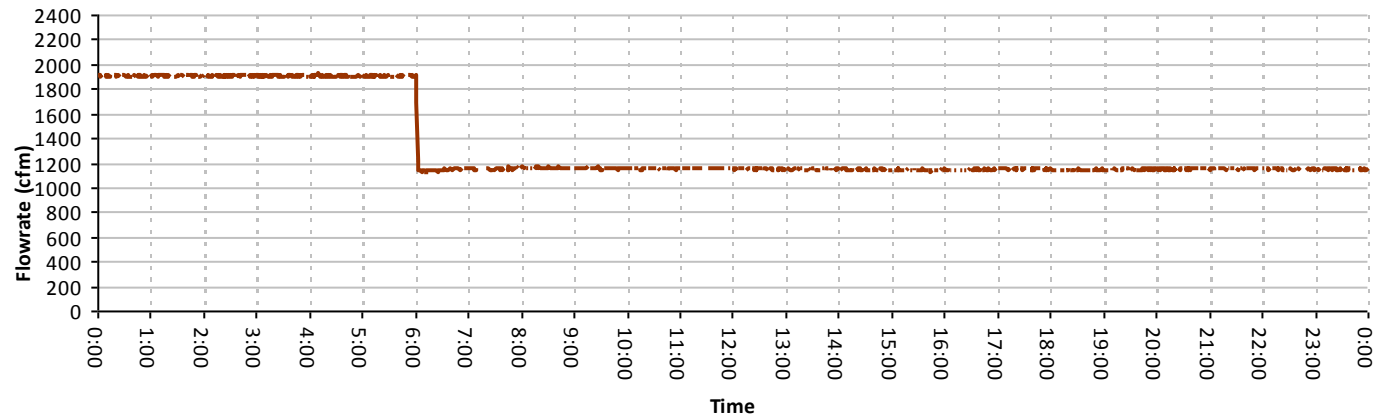
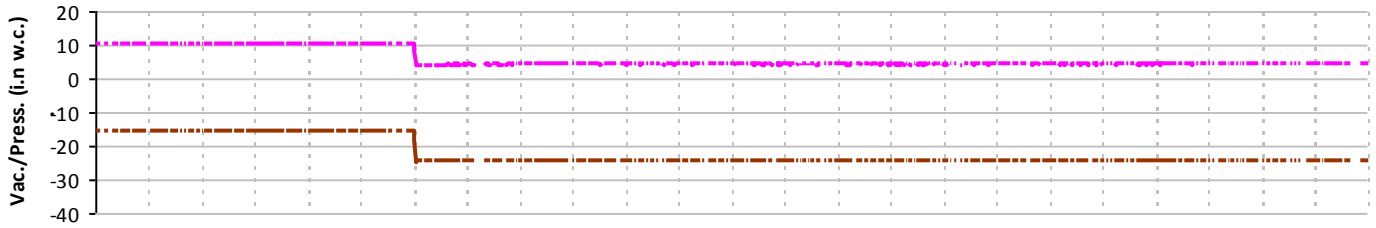
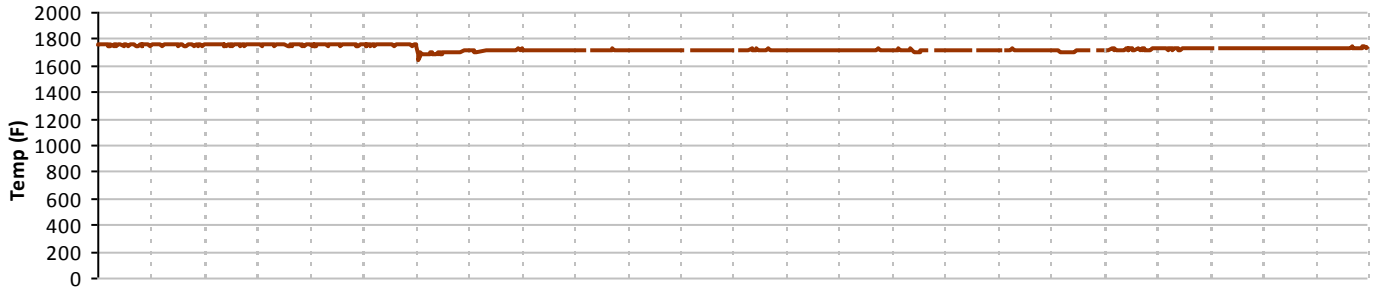
Daily Notes:

| |
|--|
| |
| |
| |



FLARE 3 DATA

| | Flowrate (CFM) | Vacuum (In WC) | Pressure (In WC) | Temp. (F) | Methane (%) | Oxygen (%) | Online Duration (min.): 1,255 |
|-------------|-------------------|-------------------|---------------------|--------------|----------------|---------------|--|
| MIN: | 1119 | -24.5 | 4.2 | 1647 | 0.0 | 0.0 | Daily Throughput (SCF): 1,697,233 |
| MAX: | 1926 | -15.2 | 10.6 | 1759 | 0.0 | 0.0 | Daily Throughput (SCF @ 50% CH4): 0 |
| AVG: | 1352 | -21.7 | 6.0 | 1730 | 0.0 | 0.0 | |



Shutdown Summary

Electronic File Distribution:

Facility

Williams Township

R. Bellas/R. Miller

AQ: R. Mullin /M. Bardzilouskas

M. Glogowski

R. Malizia

A. Faulch

Chrin: Joseph Klobusicky

jklobusicky@chrin.org

Williams Township: Melody Ernst

mernst@williamstwp.org