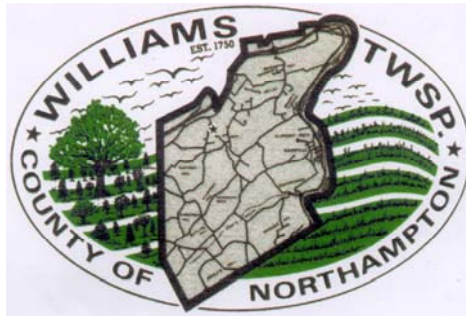


WILLIAMS TOWNSHIP INFORMATIONAL MEETING



DECEMBER 13, 2007



WILLIAMS TOWNSHIP GOALS

- Boundary Limits for the Landfill
- Open Space Preservation
- Recreation Areas
- Landscape Buffers Surrounding the Landfill
- Future Financial Security /
Host Municipal Fees
- Communication Between Township and
Chrin

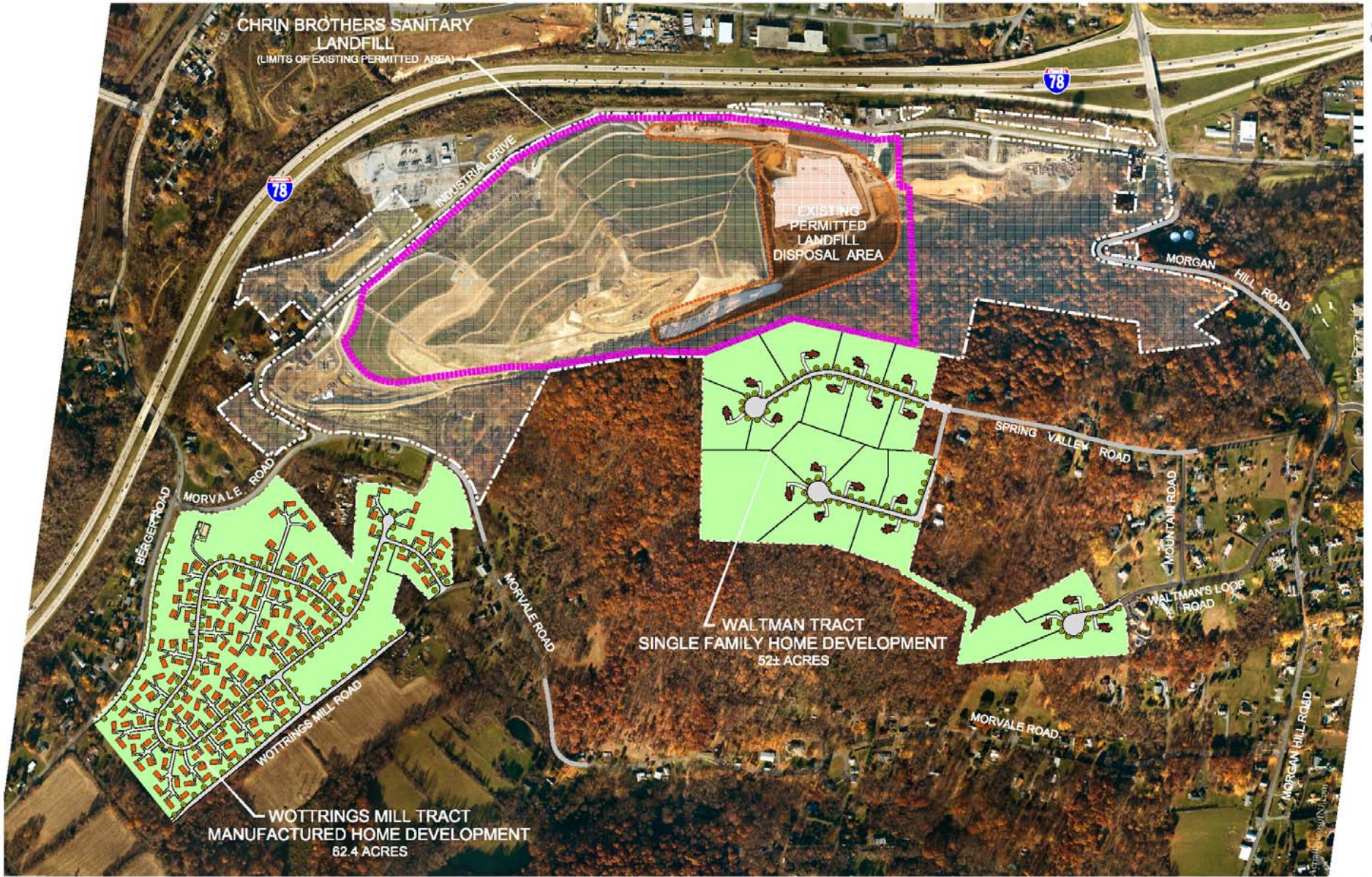
PROPOSED HOST MUNICIPAL AGREEMENT

- Waltman Tract
- Wottrings Mill Tract
- Recreation Fields
- Preliminary Draft of Solid Waste Zoning District
- Landscape Screening
- Host Municipal Fees



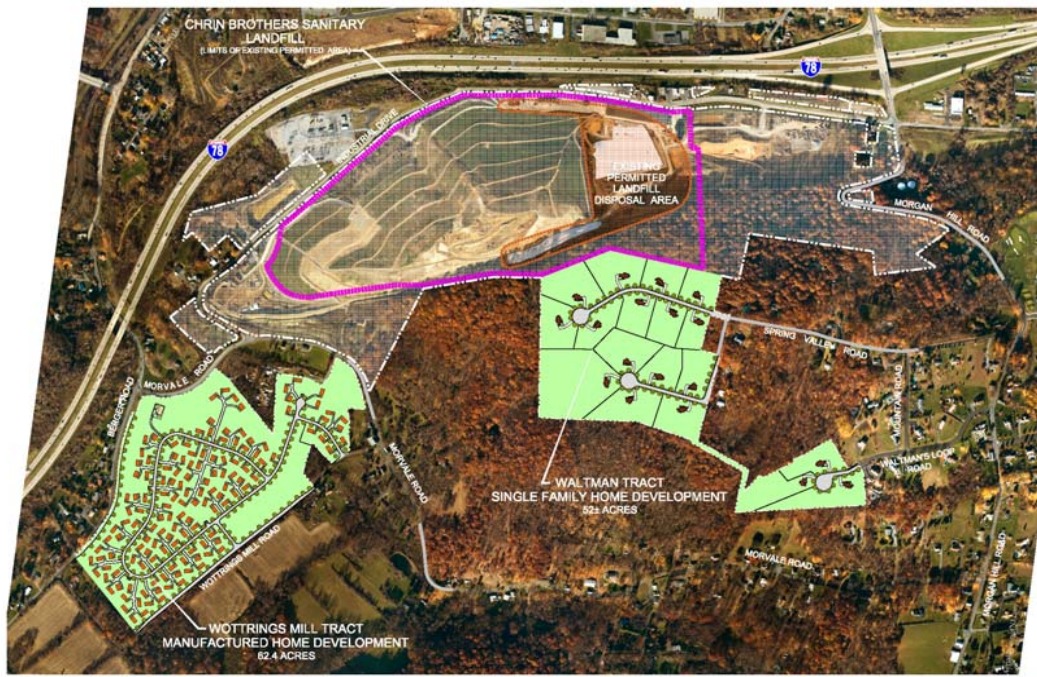
LIMIT OF LANDFILL APPROVED UNDER PERMITS ISSUED PRIOR TO 2000

LIMIT OF LANDFILL APPROVED UNDER PERMIT ISSUED IN 2000



Map was prepared by [unreadable] for the [unreadable] on [unreadable] 12/13/07.





WILLIAM TOWNSHIP INFORMATIONAL MEETING EXISTING CHRIN BROTHERS SANITARY LANDFILL PERMIT AND FUTURE LAND DEVELOPMENTS DECEMBER 13, 2017



WILLIAM TOWNSHIP INFORMATIONAL MEETING EXPANDED CHRIN BROTHERS SANITARY LANDFILL WITH ATHLETIC FIELDS AND OPEN SPACE DECEMBER 13, 2017





PROPOSED LANDSCAPED SCREENING - PHOTOGRAPH LOOKING WEST - MORGAN HILL ROAD HAIRPIN TURN



EXISTING LANDSCAPE - PHOTOGRAPH LOOKING WEST - MORGAN HILL ROAD HAIRPIN TURN



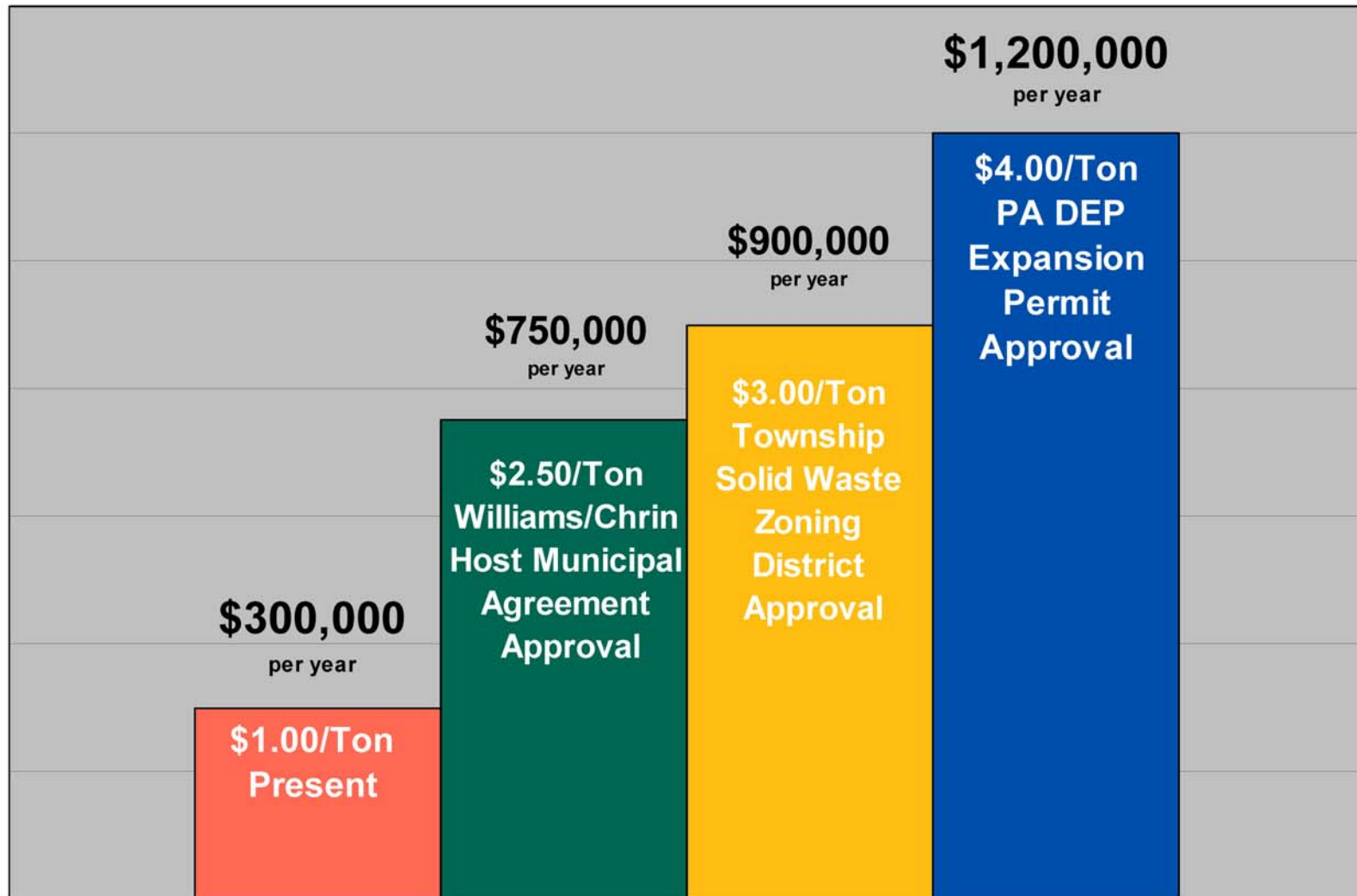
NOTE: PROPOSED TREE AND SHRUBBERY SIZES SHOWN IN RENDERING ARE REFLECTIVE OF FUTURE MATURING OF TREE AND SHRUBBERY MATERIALS.

PROPOSED LANDSCAPED SCREENING - PHOTOGRAPH LOOKING WEST - INDUSTRIAL DRIVE

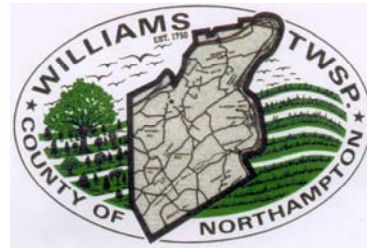


EXISTING LANDSCAPE - PHOTOGRAPH LOOKING WEST - INDUSTRIAL DRIVE

PROPOSED HOST MUNICIPAL FEE SCHEDULE



WILLIAMS TOWNSHIP INFORMATIONAL MEETING



PUBLIC COMMENTS